



**CymbIoT**  
Making IoT Smarter



# Smart Mining Management

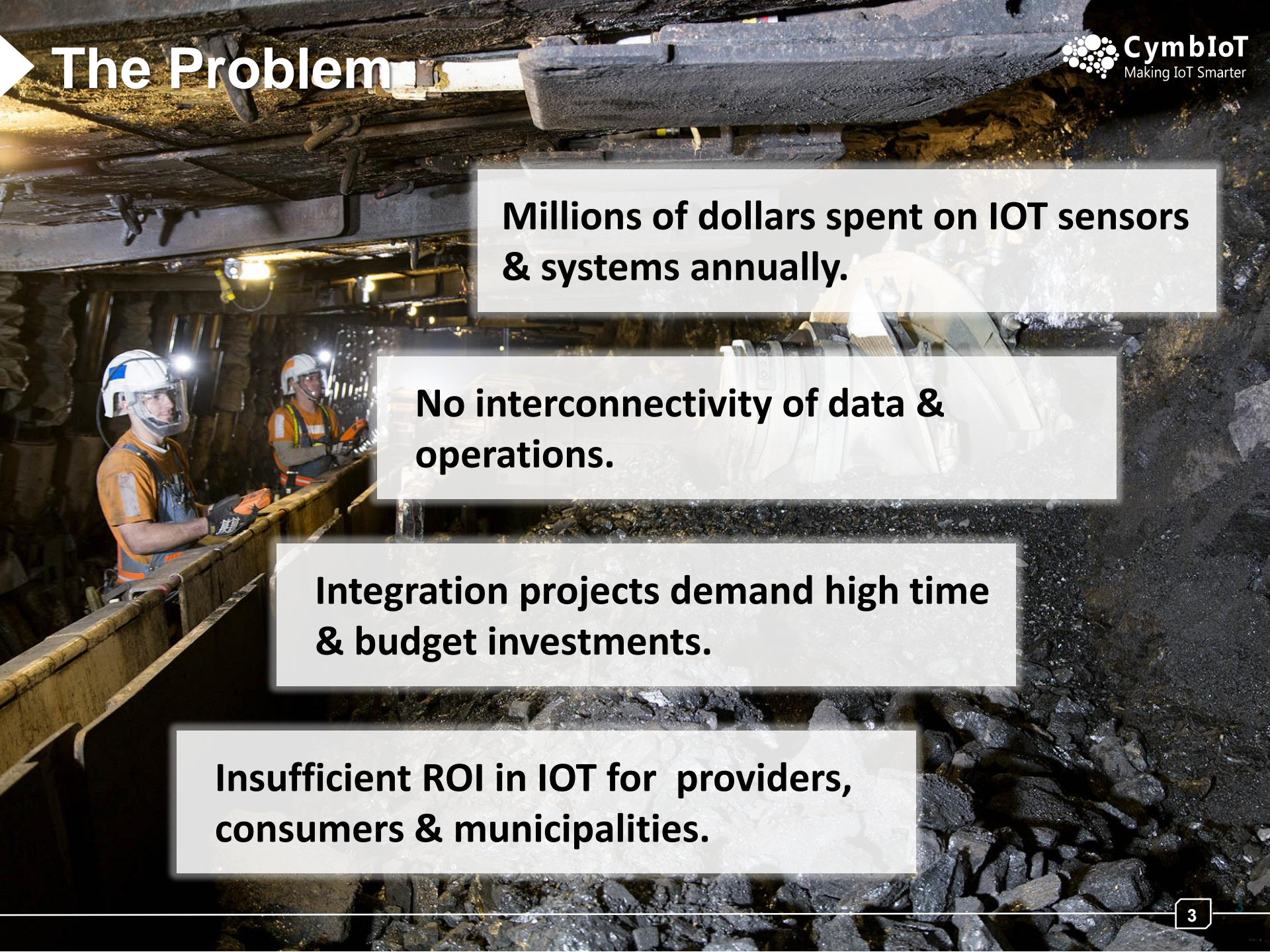
# About CymbIoT

CymbIoT for Smart Mining

Operational Scenario

Why CymbIoT?





# The Problem

**Millions of dollars spent on IOT sensors & systems annually.**

**No interconnectivity of data & operations.**

**Integration projects demand high time & budget investments.**

**Insufficient ROI in IOT for providers, consumers & municipalities.**



# The CymbloT Solution



An **off-the-shelf IOT management product** that provides cities and enterprises with **rapid integration** of new & existing sensors and systems for **efficiency, security** – and **rapid ROI**.



# The CymbloT Offering



## Product, not Program

Market-available, off-the-shelf product with over 50 IoT use cases.



## Immediate ROI

Immediate ROI for cities and enterprises via integration of existing systems and sensors within 14 days



## Flexible

Flexible integration engine to support any sensor and system:

- 70+ formats supported
- Up to 14 days for deployment of new format



## Tested & Proven

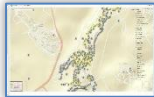
Scalable & Robust architecture supporting any kind of deployment- Cloud & on premise.



# CymbloT C&C Core Features

## Maps

Operational GIS dynamic navigation maps.



## Scalability

Endless connectivity with standard COTS HW.



## BI Data Fusion

Real-time data & operational fusion of all systems.



## Advanced VMS

Internal VMS and 3rd party video support.



## Analytics

Video, Audio & Data Analytics turn data to triggers.



## Automation

Flexible process automation wizards.



## Architecture

Hybrid cloud and on premise deployments.



## Agnostic

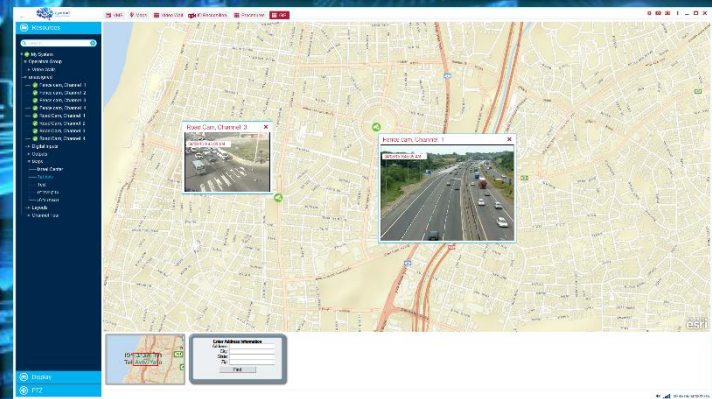
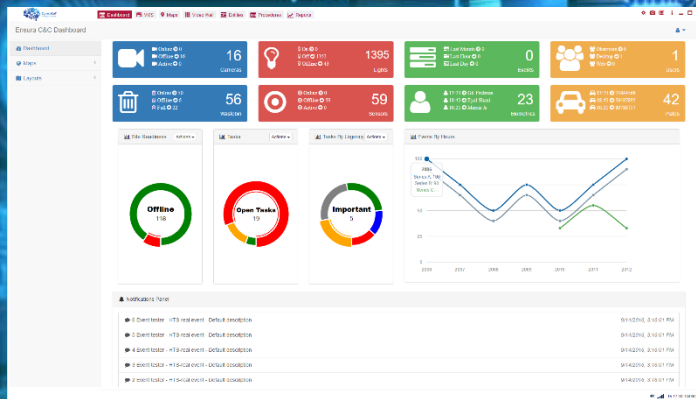
Integrate any 3rd party element.



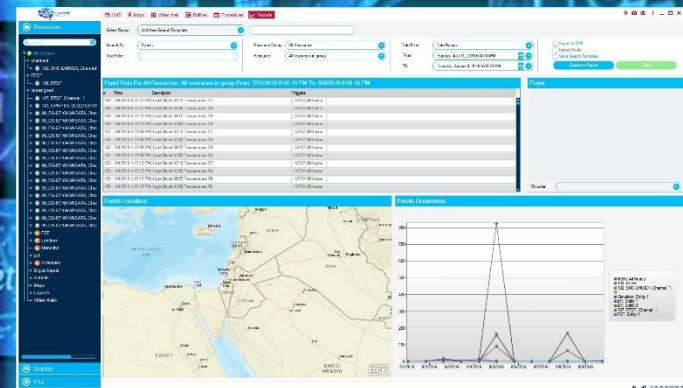
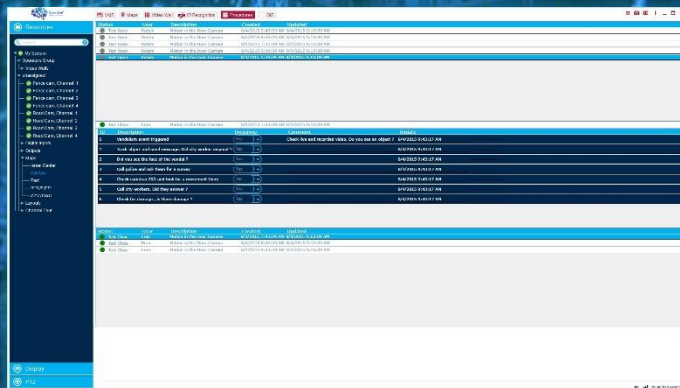
## Customization

On the fly UI design per need.





## A Unified Interface for all Security & IoT Systems

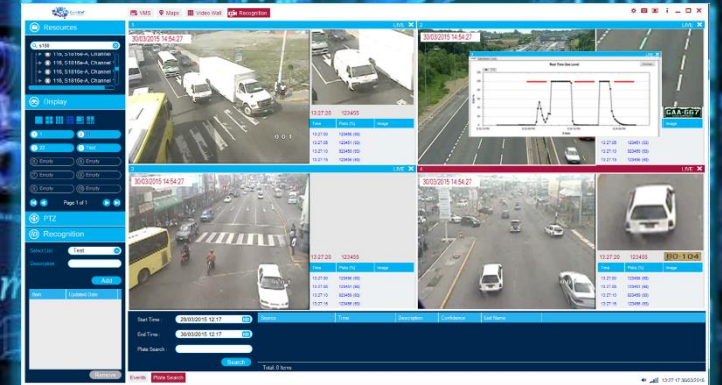
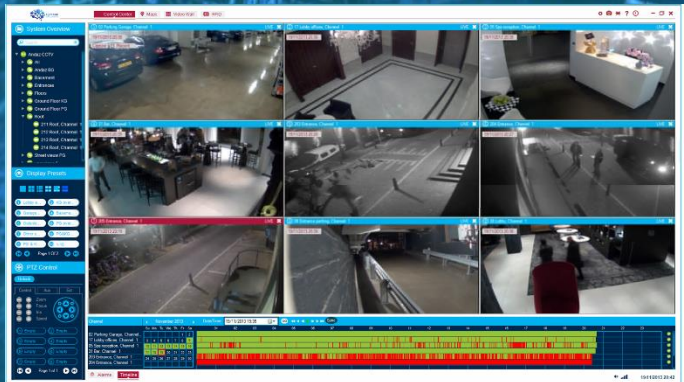


## Reporting & Task Management Module for Cross-system Queries





## Cloud-based & Onsite Deployments



## Support for Proprietary VMS & Internal Video Analytics



About CymbloT

## **CymbloT for Smart Mining**

Operational Scenario

Why CymbloT?

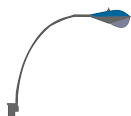


# Deployment Example



## Surveillance Camera

With analytics for Face Recognition, Access Control, and more



## Smart Resources

Turn lights, power, A/C etc. on or off based on presence, schedule, etc.



## Access Control

Control access to sensitive & dangerous locations by permissions & roles



## Structural Stability Sensor

Monitors stability of structures & pipes and alerts for weaknesses.



## Air Quality Sensors

Detect minute amounts of dangerous and/or flammable gasses.



## Fire/Smoke Sensors & Countermeasures

Detect smoke & fires as they ignite and apply countermeasures.

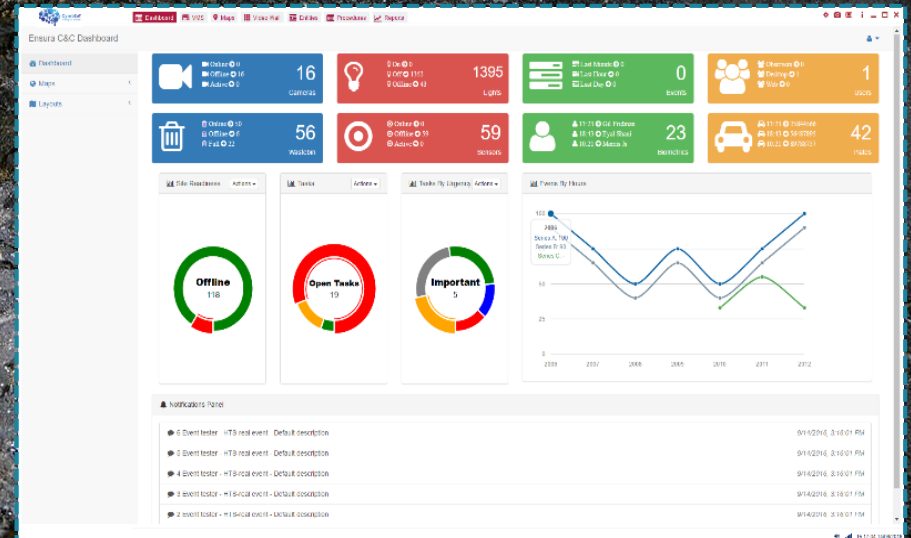
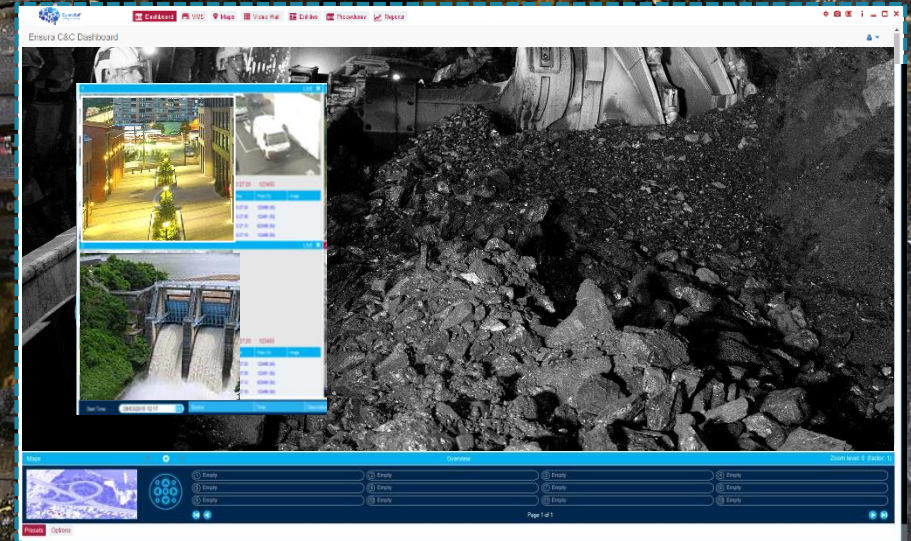
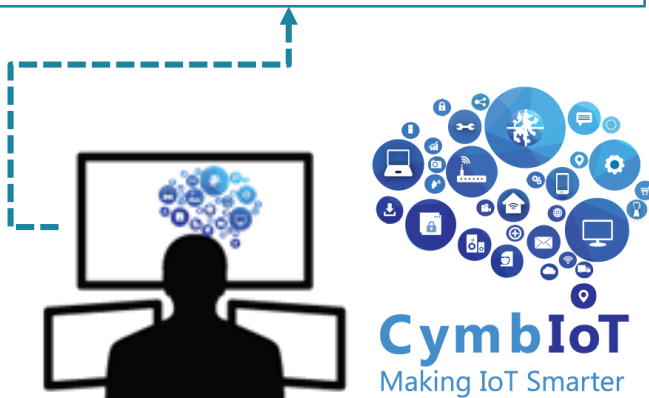




# Fusion with CymbIoT

**CymbIoT integrates all sensors and subsystems, correlating all types of data with operational triggers, and providing real-time status, analysis, and response capabilities to employees & managers:**

- ▶ Virtually limitless scalability & flexibility
- ▶ Powerful automatic process engine
- ▶ Permission-based GUI customization per user
- ▶ Operator Dashboard & Executive Dashboard
- ▶ Integration with any 3rd party sensor or system





About CymbIoT

CymbIoT for Smart Mining

Operational Scenario

**Why CymbIoT?**

# Operational Scenario

1. Air quality sensors identify minute amounts of methane.





# Operational Scenario

1. Air quality sensors identify minute amounts of methane.
2. All data from air quality sensors is analyzed by CymbIoT to identify location & dispersal of methane.





# Operational Scenario

1. Air quality sensors identify minute amounts of methane.
2. All data from air quality sensors is analyzed to identify location & reach of methane.
3. CymbIoT implements automatic HAZMAT procedures:
  - i. Employees are alerted.
  - ii. Reactive illumination is turned off in all relevant locations.
  - iii. Evacuation of relevant areas is prompted.
  - iv. Access doors to contaminated locations are locked once sensors identify no employees are present.
  - v. Countermeasures are applied in contaminated location





About CymbIoT

CymbIoT for Smart Mining

Operational Scenario

**Why CymbIoT?**



# ► Why Choose CymbIoT C&C?

A single Command & Control interface for all existing and new sensors, systems, and subsystems, providing:

Rapid, out-of-the box integration.



Immediate ROI from Day One



Interface between all data & systems.



UX for operational & executive levels.



**CymbIoT**  
Making IoT Smarter

# Some Global References...



## NETHERLANDS

Hyatt Hotel Chain  
Management & Security



## ISRAEL

4 Smart City Programs



## MEXICO

Federal Jail Management  
& Security



## JAMAICA

Kingston Safe City



## NEPAL

International Airport  
Management & Security



## NETHERLANDS

Private port Management  
& Security



## SINGAPORE

Safe Transit Program



## INDIA

Petrol Station  
Management & Security





**CymbIoT**  
Making IoT Smarter

## HEADQUARTERS

**Mail:** P.O.B 37, Azur 5819001  
ISRAEL  
**Tel:** +972 (0)3-631-6881  
**Contact Us:** [info@cymbiot.com](mailto:info@cymbiot.com)

## SINGAPORE OFFICE

**Mail:** 6A Shenton Way  
SINGAPORE 068807  
**Contact Us:** [APJ@cymbiot.com](mailto:APJ@cymbiot.com)

## ROMANIA OFFICE

**Mail:** Hareju 29, 2nd District, Arh.  
Bucharest, ROMANIA  
**Contact Us:** [office@cymbiot.ro](mailto:office@cymbiot.ro)

## ONLINE CONTACT

[www.cymbiot.com/contact](http://www.cymbiot.com/contact)